

[Straw.com Home](#) ✕ [Crystal Palace Yarns](#) ✕ [Ashford-USA](#) ✕ [Free Patterns](#) ✕ [Search this Site](#)
✕ [Shop List](#)

185a

Crystal Palace Yarns
free knitting pattern

Waikiki T-Strap Top

Easy

SIZES: Petite (Small, Medium, Large).
Finished Measurements: 30 (32,34,36)."

MATERIALS:

Crystal Palace Waikiki Fiesta, color no. 2860, 4(5,6,6) skeins.

Crystal Palace Bamboo Needles size 5 & 7 or size to obtain correct gauge.

One 3/4" button

[See a Waikiki Sample Card here.](#)

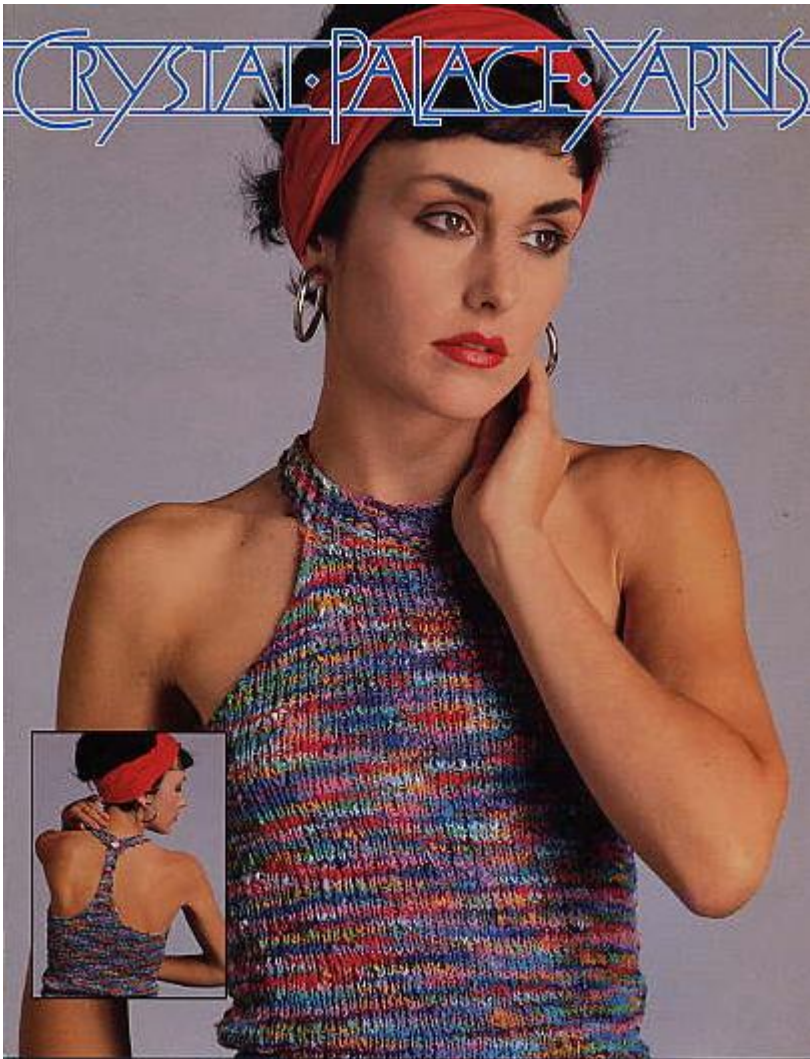
GAUGE: 4-1/2 sts = 1." To save time, take time to check gauge.

BACK: With smaller needles cast on 62(66,70,76) sts and work in k1, p1 rib for 1." Change to larger needles and St st inc 6 sts evenly across first row 68(72,76,82) sts. Cont until piece measures 11(11-1/2,12,12-1/2)."

TO SHAPE T-STRAP: Bind off first 24(26,28,30) sts at the beg of the next 2 rows. Cont working on 20(20,20,22) sts for 4 rows. Then dec 1 st each side every 4 rows 5 times, 10(10,10,12) sts. Work even until strap measures 8(8-1/2,9,9-1/2)". Change to smaller needles and k1, p1 rib for 1." Bind off.

FRONT: Work as for back until piece measures 11 (11-1/2,12,12-1/2)".

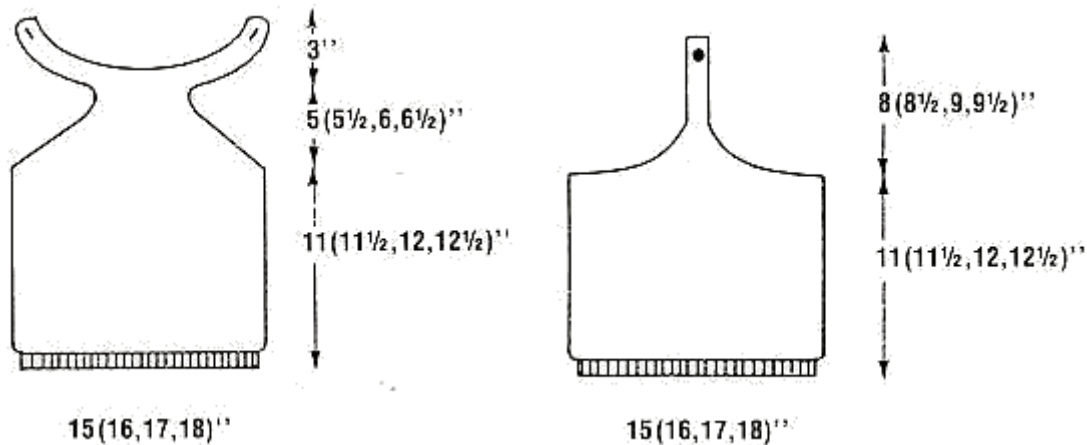
TO SHAPE FRONT: Dec 1 st each side every row 8(9,10,11) times then every other row 6(6,7,7) times then every 3rd row 2 times, then every other row 4 times, 28(30,30,34) sts. Cont until piece measures 16(17,18,19)."



NECK STRAP: With smaller needles cast on 24(26,28,30) sts on each side of bib top. K1, p1 rib for 6(6,7,7) rows, make buttonholes, one on each side of neck strap. Work 6(6,7,7) rows. Bind off.

FINISHING: Sew side seams. Sew button at top of back T-strap.

Designed by Gabriela Fernandez



We've done our best to make these directions accurate. However, we cannot be responsible for typographical errors, human errors or variations in work by individual knitters.

copyright 1987-2003 Crystal Palace Yarns - this pattern may be used for non-commercial personal or guild use. It is not to be used in any "for sale" publication



[Straw.com Home](#) ✕ [Crystal Palace Yarns](#) ✕ [Ashford-USA](#) ✕ [Free Patterns](#) ✕ [Search this Site](#)
✕ [Shop List](#)