

Rebecca-online.de

For Magazines and Subscriptions
 Phone: +49/41 01/55 38 87
 E-mail: info@rebecca-online.de



Pattern 13/14 from Rebecca 18

Bikini with Ribbed Pattern

GGH yarn SAMOA: 50% cotton, 50% acrylic (about 95 m/50 g)

Size: to fit bust 82/86 cm [32/34"].
 All measurements of line chart are in centimeters (cm).

Materials: yarn GGH, quality "SAMOA", 200 g #16 black.

3-4 mm [size 3-5] circular needle 40 cm long, or size to obtain gauge.

Rib pattern: alt K2, P2.

Gauge: 19 sts. and 26 rows/rounds rib patt, each to 10 cm [4"], measured slightly stretched in width.

vedge (= on RS rows slip st. purlwise with yarn at front of work; on WS rows K 1st edge st. tbl, and K last edge st.).

When work measures 15 cm, on 27th row of chart, divide work at center and cont each side sep.

When work measures 26 cm there are 8 sts. left on each needle. Cont even for about 20 cm over these sts. for straps, then slip all sts. onto a holder.

Top

See chart for right top, 1/2 top = 38 sts. Only RS rows are given; on WS work sts. as they appear. Also, only right half is given; work left half in reverse.

Work rows 1-54, then for straps rep rows 55-56.

Top: work in one piece in rounds.

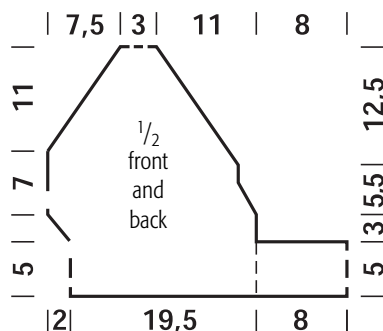
Cast on 104 sts. and work in rib patt, starting with P1.

When work measures 5 cm, after 14 rounds, bind off the first 28 sts. for back = 76 sts.

Cont in open rows over sts. of front foll chart, starting row with edge st., K2. Work edge st. on either side as chain sel-

Pants

For right leg cast on 78 sts. and work in rib patt, starting 1st WS row with edge st., P1. On 6th row (= RS row) inc 1 st. at each end for crotch shaping as foll: work



© by HW-Verlag

All rights reserved. Our patterns are for personal use only. None of our designs nor any part thereof may be used or reproduced commercially in any form or by any means whatsoever without the prior written permission of the publisher.

Rebecca-online.de

edge st. and 5 in patt, then make 1 knitwise tbl; work to 6 from end of row, then make 1 knitwise tbl. Rep these dec on every 2nd row 3 times, work next inc also knitwise tbl, and the last 2 inc purlwise tbl = 86 sts. Work WS row and another 4 rows even = about 6 cm in height.

Now work crotch dec as foll: at right edge (back panel) bind off on every 2nd row 5 sts. once, 3 sts. twice and 2 sts. twice, and at left edge (front panel) on every 2nd row 4 sts. once, 2 sts. 3 times and 1 st. once = 60 sts. at a height of 10 cm. Slip all sts. onto a holder and work left leg in reverse to match.

Now pick up and work sts. of left leg and right leg, marking round change at center back and binding off the edge sts.: on each panel K 1st edge st. tog with foll st., slip last K st. from end knitwise, K edge st., pass slipped st. over = 116 sts. There are now 4 K sts. at center front and back. On 2nd foll round slip 1st of these sts. knitwise, K1, pass slipped st., over, then work K2 tog = 112 sts.

When work measures 18 cm dec 1 st. twice at center back as foll: from round change work 13 in patt, P next 2 P sts. tog; work to 15 from end of round, then P 2 P sts. tog. On 4th foll round dec 2 sts. again

as foll: from start of round work 12 in patt, then slip next st. (= 2nd K st. of a K rib) knitwise, K1, pass slipped st. over; work to 14 from end of round, then K2 tog. Rep these dec on every 4th round twice more = 104 sts.

Cont even until work measures 28 cm, then bind off all sts.

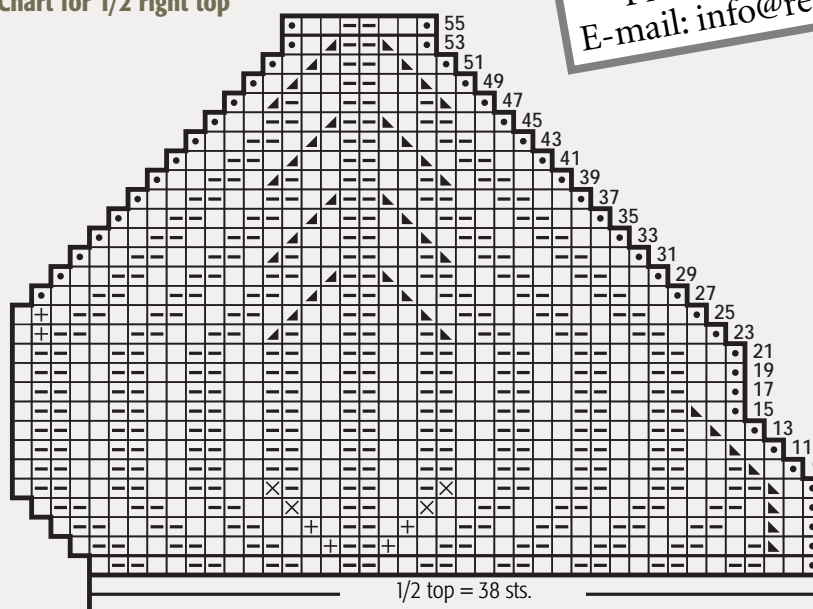
Finishing: bring ends of straps of bikini top tog and graft tog.

Join crotch and leg seams of pants.



For Magazines and Subscriptions
 Phone: +49/41 01/55 38 87
 E-mail: info@rebecca-online.de

Chart for 1/2 right top



Legend

- = K1
- ⊞ = P1
- ◻ = edge st.
- ⊞ = make 1 knitwise tbl
- ⊞ = make 1 purlwise tbl
- ⊞ = slip 1 knitwise, K1, pass slipped st. over
- ⊞ = K2 tog